

A thick dark grey vertical bar is positioned on the left side of the page. From the bottom of this bar, several thin, curved lines in shades of grey and black extend upwards and outwards, creating an abstract, organic shape.

Installation Manual

[How to install SFDC File Exporter on your system]

Sumit Kumar Singh
(gbu.sumit@gmail.com)

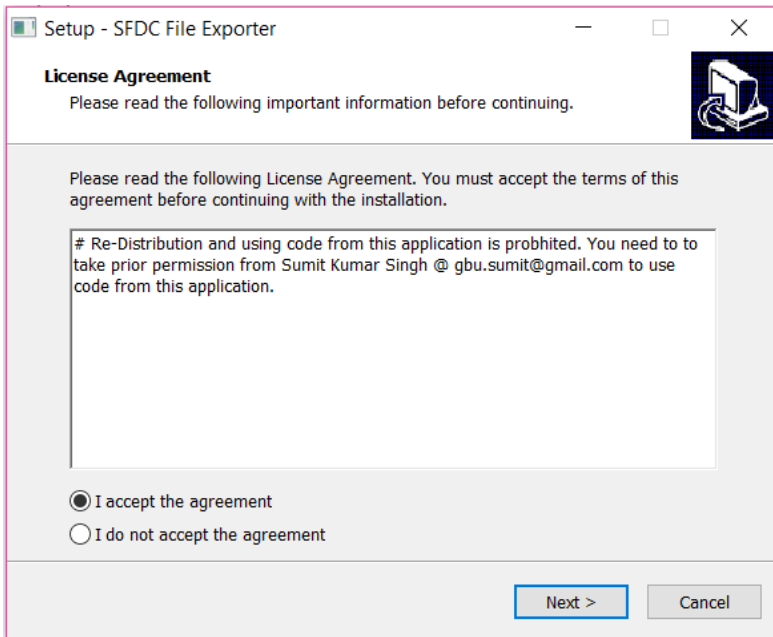
Prerequisite

JRE 1.8.0 must be installed on the system.

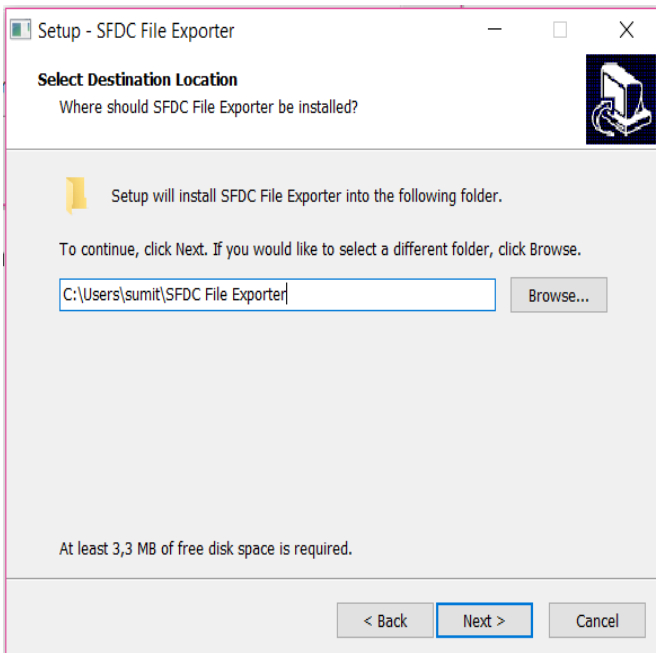
Step1: Download SFDC File Exporter-

- Go to <https://www.sfdcfileexporter.com/sffxhome/>
- Click on 'DOWNLOAD SFDC FILE EXPORTER' to download the app.

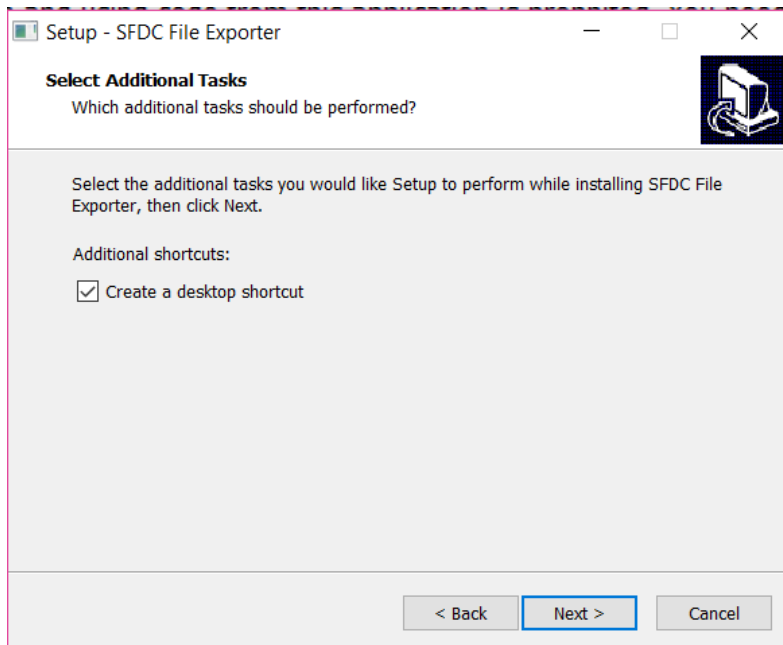
Step 2: Run the downloaded file.



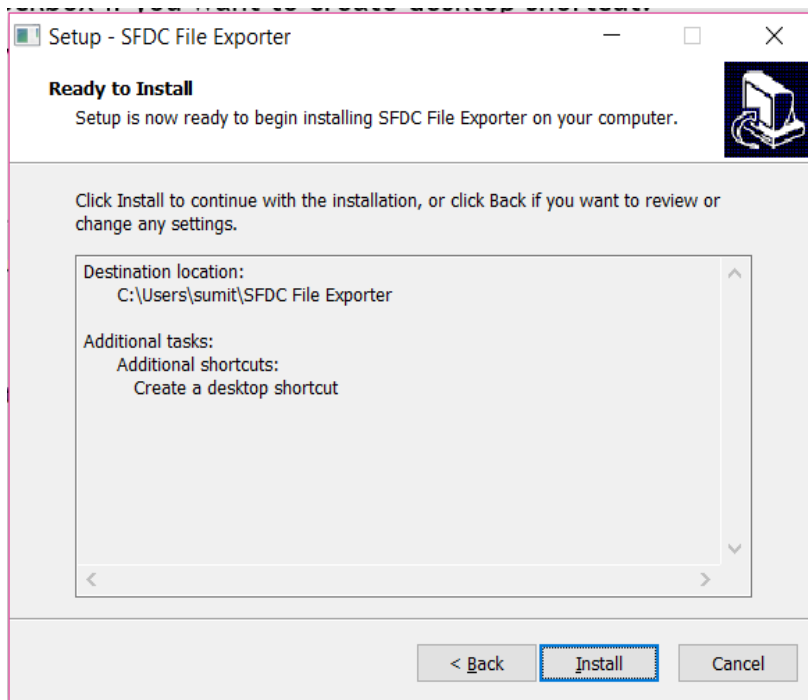
Click on Next. Choose the directory where you want to install the SFDC File Exporter. We strongly recommend to install in your user directory -



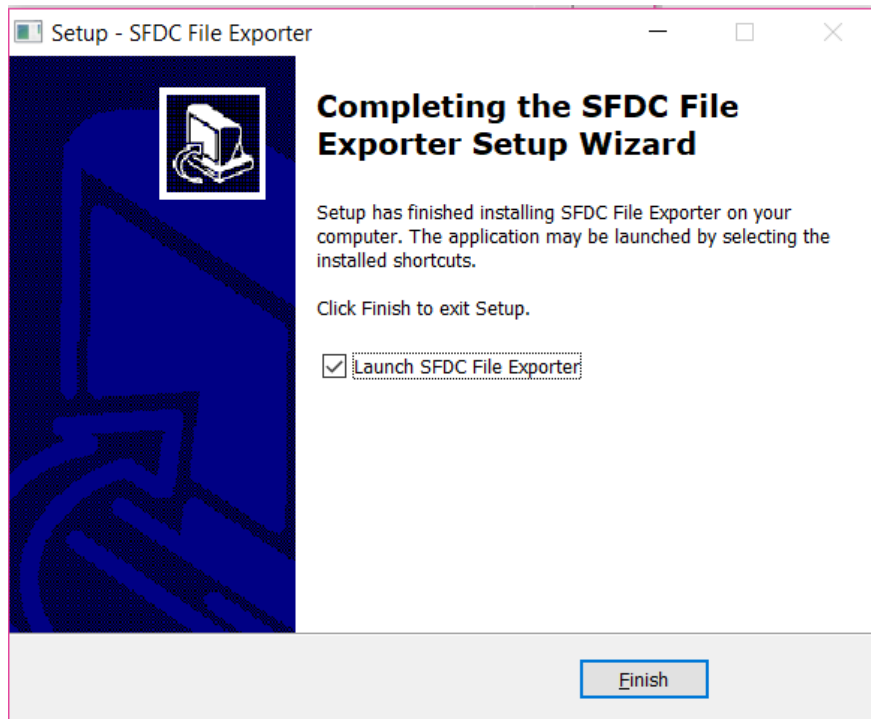
Click on next. Select checkbox if you want to create desktop shortcut.



Cumulative information where the SFDC File Exporter will be installed -



Click on 'Install' to complete the installation.



You have successfully installed SFDC File exporter to your system.

How to use it? - See user manual.

Any problems? - See FAQs or drop us a mail gbu.sumit@gmail.com